



INVERTER IN-CEILING CASSETTE

Ideal for various applications including the lounge, family room, restaurants, hotels, offices and meeting rooms.



INVERTER TECHNOLOGY

DC Inverter Technology

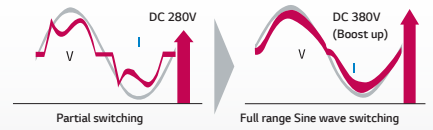
With the advancement of inverter technology comes more quiet, economical and powerful air conditioning systems. The LG air conditioner is manufactured using PFC and sine wave technology.

Step-up Inverter using PFC & Sine Wave Control Technology (PFC : Power Factor Correction).

• PFC Control in Power Input



• Sine wave Control in BLDC Compressor



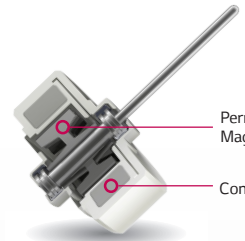
BLDC Fan Technology

The Brushless Direct Current (BLDC) motor is made up of powerful ND magnets providing high torque, resulting in the ability to provide large air volume and high static pressure capability. This allows high speed operation at reduced electrical and mechanical noise.



AC Motor

- Lower Efficiency
- Higher operating temperature
- Difficult to precisely control fan speed



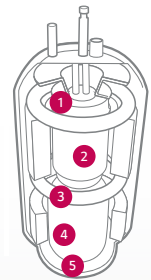
BLDC Motor

- Low Electrical and mechanical noise
- Precise speed control
- Durable

Powerful BLDC Compressor

The LG inverter air conditioner comes with a BLDC compressor that uses strong neodymium magnets. Its compressor has improved efficiency compared with AC inverter compressors.

- 1 Minimised Oil circulation
- 2 High Efficiency Motor
- 3 Optimise Compression Efficiency
- 4 Optimise Vibration, Noise
- 5 High Reliability

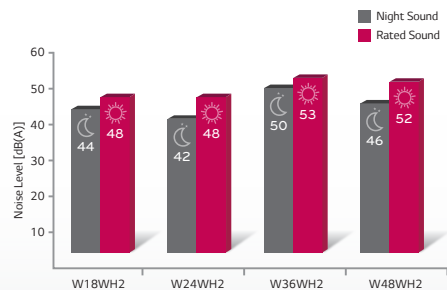


Night Quiet Operation

Night Quiet Operation is a control feature designed to reduce the noise level of the outdoor unit at night.

The feature is activated via a dip switch[†] on the outdoor PCB.

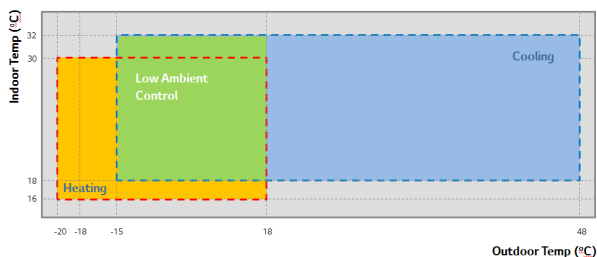
[†]This function is not user adjustable, please contact your nearest AC installer.



INVERTER IN-CEILING CASSETTE

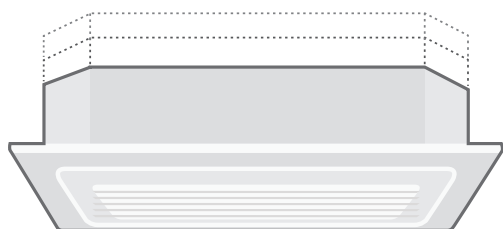
► WIDE OPERATING RANGE

When cooling rooms in the event of low outdoor temperatures, the BLDC inverter compressor and outdoor BLDC fan motor are used to adjust the air flow and volume, with a view to ensuring efficient operation by allowing the air conditioner to keep operating at -15°C.



► SLIM & COMPACT SIZE

The indoor unit with its slim and compact size enables installation in confined spaces.

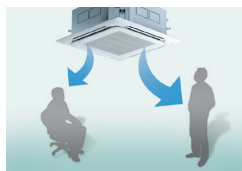


7.1 kW Model

Model	Size
UTN24WH2	204mm
UTN18WH2	256mm
UTN36WH2	288mm
UTN48WH2	288mm

► 4 VANE INDEPENDENT OPERATION

Vane angle control satisfies both users who like direct air or indirect airflow and it also reduces cold air drafts.



Direct air flow

Indirect air flow



Uniform vane operation



Individual vane operation

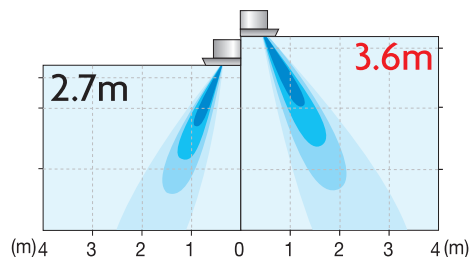


Individual vane angle control

► HIGH CEILING OPERATION

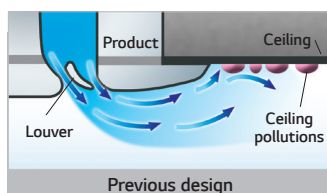
Depending on the height of the installation, LG air conditioners allow you to vary the speed of the indoor fan motor.

When installation is low, the RPM can be reduced it can be increased when the installation is high to ensure optimum comfort levels. The speed can be adjusted via the slide switch on the back of the LCD wired remote.

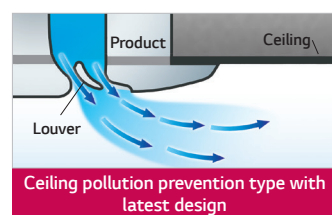


► DESIGN TO REDUCE CEILING STAINS

The new outlet design can reduce ceiling stains from air currents flowing along the ceiling.



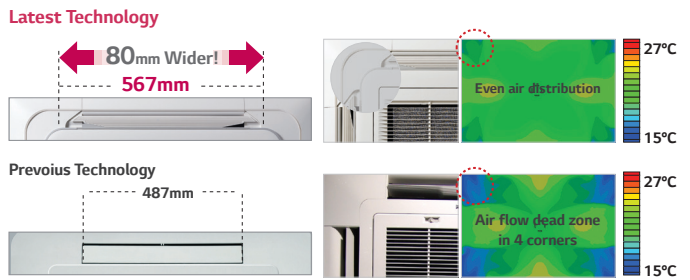
Previous design



Ceiling pollution prevention type with latest design

WIDE JET AIR FLOW

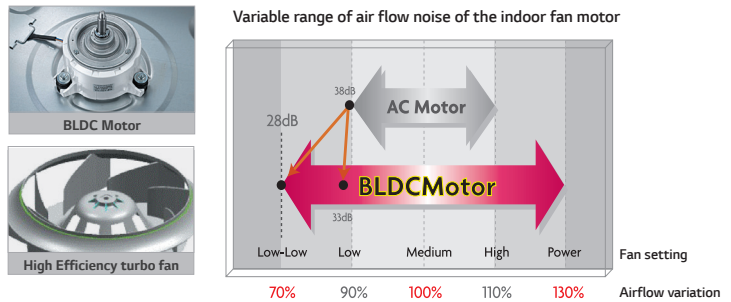
Wide vanes reduce dead bands and provide better air and temperature distribution.



LOW NOISE DESIGN

BLDC motor, Low indoor noise with high efficiency turbo fan.

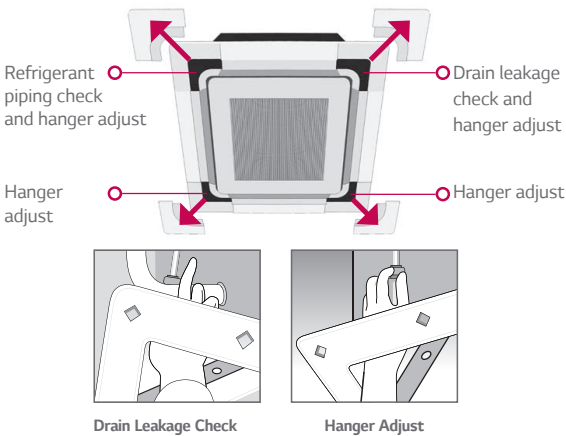
- Improved outlet & airflow design.
- Reduction of unnecessary noise through the high efficiency turbo fan design.
- Resonance noise reduction by anti-vibration design & BLDC motor.



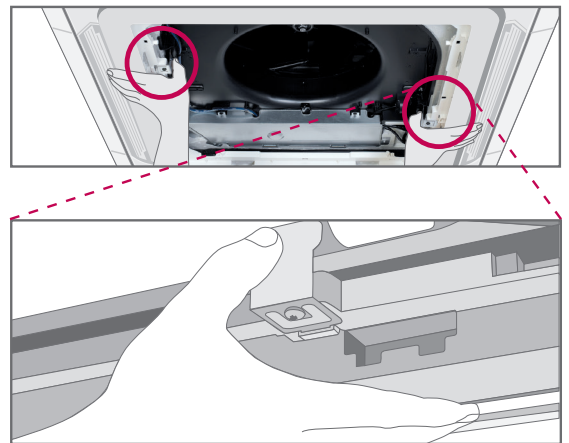
CONVENIENT PANEL INSTALLATION

The detachable corner design makes it easy to adjust the hanger during installation and to check for leaks in the drain connection pipe.

Detachable Corner Design

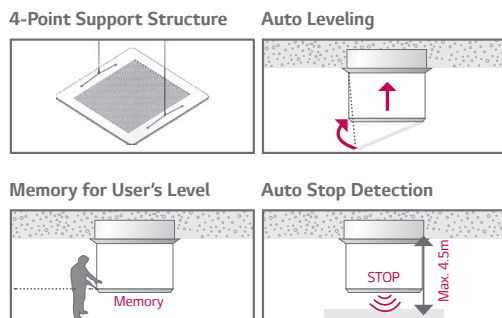


It is easy to install the panel to the body, using the lock tab panel design.



AUTO ELEVATION GRILLE

Easy filter cleaning with elevation grill.



* Operating with wired remote controller PQRVSL0(QW) and wireless remote controller included in PTEGM0.
* Except UTN/8WH2
* Applied to cassette panel PT-UMC1

Vitalise with

We at LG are committed to making the lives of our customers more comfortable. Through continuous improvement in R&D and innovation to enhance energy efficiency*, LG introduces the H2-Inverter, an energy efficient, quiet unit giving you and your business comfort.

Innovation for a better life

*Excluding UT18Q2

Package Model	Product Image	Capacity (kW) Cooling / Heating	EER/COP	Sound Pressure	Dimension (mm) Indoor unit Dimension panel (l/h/w)
UT18Q2 Indoor: UTN18WH2 Outdoor: UU18WH2 Front Panel: PT-UQC		4.7 / 5.5	3.13 / 3.48	41 / 39 / 36	570×256×570 700×22×700
UT24Q2 Indoor: UTN24WH2 Outdoor: UU24WH2 Front Panel: PT-UMC1		7.1 / 8.0	3.57 / 3.54	38 / 36 / 34	840×204×840 950×25×950
UT36Q2 Indoor: UTN36WH2 Outdoor: UU36WH2 Front Panel: PT-UMC1		9.5 / 10.8	4.40 / 4.32	44 / 40 / 36	840×288×840 950×25×950
UT48Q2 Indoor: UTN48WH2 Outdoor: UU48WH2 Front Panel: PT-UMC1		13.4 / 15.5	3.51 / 3.73	45 / 41 / 38	840×288×840 950×25×950

Wired Remote Controller

The wired remote controller features a large wide LCD screen which makes it easy for users to see and use the digital operating controls.

- Easy to read large font
- Large wide LCD
- Easy installation



PQRCVSL0(QW)



Optional (PQWRHDF0)
Wireless Remote Controller

Specifications



Indoor				UTN18WH2	UTN24WH2	UTN36WH2	UTN48WH2	
Front Panel				PT-UQC	PT-UMC1	PT-UMC1	PT-UMC1	
Power Supply				220-240 / 1 / 50	220-240 / 1 / 50	220-240 / 1 / 50	220-240 / 1 / 50	
Capacity	Cooling	Min/Nom/Max	kW	2.0 ~ 4.7 ~ 5.5	2.8 ~ 7.1 ~ 7.8	4.5 ~ 9.5 ~ 13.0	5.5 ~ 13.4 ~ 16.0	
	Heating	Min/Nom/Max	kW	2.2 ~ 5.5 ~ 6.1	3.2 ~ 8.0 ~ 8.8	5.0 ~ 10.8 ~ 13.7	6.1 ~ 15.5 ~ 18.0	
Running Current				A	0.4	0.6	1.00	
Heat Exchanger	#1_Coil Row x Column x FPI	mm		(2 x 10 x 18) x 1	(2 x 8 x 19) x 1	(2 x 12 x 19) x 1	(2 x 12 x 19) x 1	
	#1_Coil Row x Column x FPI	mm		-	-	(1 x 10 x 19) x 1	(1 x 10 x 19) x 1	
Fan	Motor Output x Number of Unit	W x No.		43 x 1	60 x 1	135.8 x 1	135.8 x 1	
	Air Flow Rate (H / M / L)	m ³ /min		13.0 / 12.0 / 11.0	17.0 / 15.0 / 13.0	32.0 / 26.1 / 20.2	33.0 / 28.0 / 22.0	
Dimensions	Body	WxHxD	mm	570 x 256 x 570	840 x 204 x 840	840 x 288 x 840	840 x 288 x 840	
	Decorative Panel	WxHxD	mm	700 x 22 x 700	950 x 25 x 950	950 x 25 x 950	950 x 25 x 950	
Net Weight				kg	15.5	20.5	28	
Sound Level (H / M / L)				dB(A)	41 / 39 / 36	38 / 36 / 34	44 / 40 / 36	45 / 41 / 38
Piping Connection	Liquid	mm		Ø 6.35	Ø 9.52	Ø 9.52	Ø 9.52	
	Gas	mm		Ø 12.7	Ø 15.88	Ø 15.88	Ø 15.88	
	Drain (O.D. / I.D.)	mm		Ø 32.0 / 25.0	Ø 32.0 / 25.0	Ø 32.0 / 25.0	Ø 32.0 / 25.0	
Dehumidification Rate				l/h	2.1	2.4	1.5	
Refrigerant					R410	R410	R410	
Power and Communication Cable				No.xmm ²	4C x 0.75	4C x 0.75	4C x 0.75	



Outdoor				UU18WH2	UU24WH2	UU36WH2	UU48WH2
Running Current	Cooling		A	6.6	8.7	9.5	16.6
	Heating	Nom	A	6.9	9.8	10.8	18.0
Power Supply				220-240 / 1 / 50	220-240 / 1 / 50	220-240 / 1 / 50	220-240 / 1 / 50
Power Supply Cable (includes Earth)				No.xmm ²	3C x 2.5	3C x 2.5	3C x 5.0
Internuit Cable (Includes earth)				No.xmm ²	4C x 0.75	4C x 0.75	4C x 0.75
Dimensions				WxHxD	mm	870x655x320	950x834x330
Net Weight				kg	46.0	60.0	91.5
Compressor	Oil Type			FVC68D	FVC68D	FVC68D	FVC68D
	Oil Charge		cc x No.	900 x 1	900 x 1	1,300 x 1	1,300 x 1
Refrigerant	Cycle Charge		g	1,400	2,000	3,400	3,400
	Additional Charging Volume		g/m	20	40	40	40
Heat Exchange				(RowxColumnxFins per inch)x No.	mm	(2 x 28 x 14) x 1	(2 x 38 x 14) x 1
Fan motor				Output	W x No.	85.4 x 1	124 x 1
Fan				Air Flow Rate	m ³ /minxNo.	50 x 1	58 x 1
				l/s	833	966	916 x 2
Air Circulation				CMM	50	58	110
Sound Level (Max Power)				dB(A)	60	62	66
Sound Pressure Level	Cooling	Rated	dB(A)	48	48	51	52
	Heating	Rated	dB(A)	51	52	53	54
Max Piping Length				m	40	50	75
Piping Elevation Difference				IDU-ODU	Max.	m (ft)	30
Operation Range (Outdoor Temperature)	Cooling	Min. ~ Max.	°C DB	-15-48	-15-48	-15-48	-15-48
	Heating	Min. ~ Max.	°C DB	-18-18	-18-18	-20-18	-20-18

LG Electronics Australia Pty Ltd.

New South Wales / Head Office
 2 Wonderland Drive EASTERN CREEK NSW 2766
 PH : 02-8805-4000 FAX : 02-8805-4248

Queensland
 23 Terrace Place MURARRIE QLD 4172
 PH : 07-3908-9000 FAX : 07-3399-4179

Customer information Centre is available
 7AM-7PM on 1300 54 2273 (1300 LG CARE)
www.lg.com.au/airconditioning

Western Australia
 Unit 1/1A 2 Business Way Malaga 6090
 PO Box 1724 Malaga WA 6944
 PH : 08-9249-3721 FAX : 08-9249-1300

South Australia
 162 Richmond Road, MARLESTON SA 5033
 PH : 08-3238-0200 FAX : 08-8238-0299

Victoria
 3 John Deere Court, Parkwest Estate
 DERRIMUT VIC 3030
 PH : 03-8369-0900 FAX : 03-9931-0677

New Zealand
 LG House Building 2, Level 1,
 60 Highbrooke Drive, Highbrook Business Park,
 East Tamaki, Auckland 2013 New Zealand
 PH : +64 (09) 914-2444 FAX : +64 (09) 914-2441

Customer Service Helpline
 0800 54 2273 (0800 LG CARE)
www.lg.co.nz